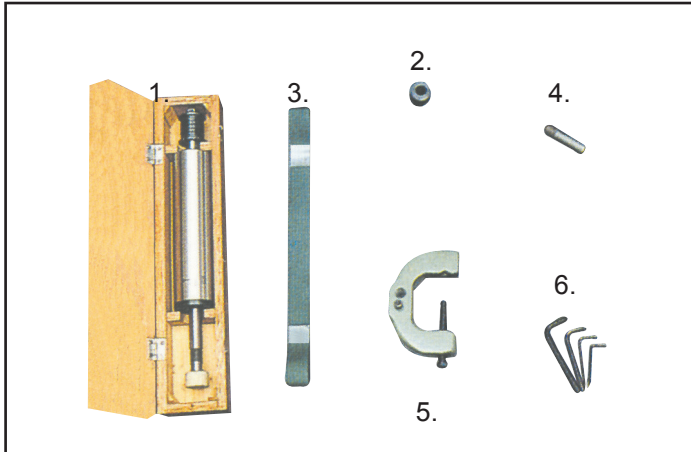
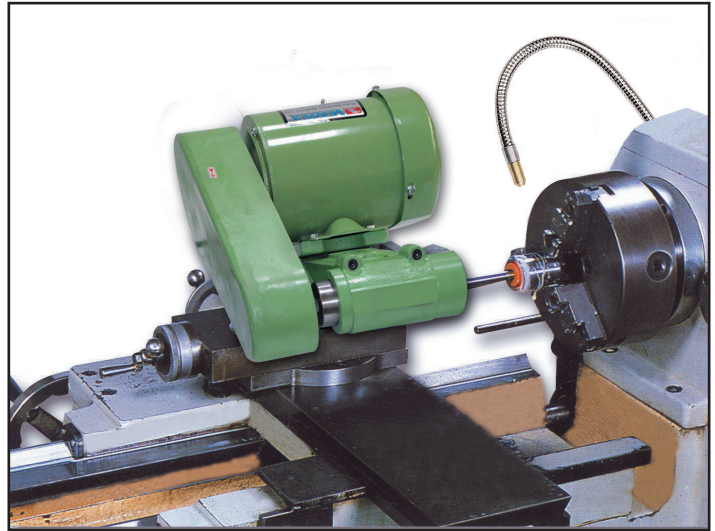




For Internal Grinding



Standard Accessories

1. Internal Spindle	1
2. Pulley for Internal Grinding	2
3. Flat Belt	1
4. Diamond tool	1
5. Holder for Diamond Tool	1
6. Key Folds (8, 5, 3, 2mm)	4

- ※ ECONOMICAL TYPE FOR LIGHT DUTY ONLY
- ※ 220V/3 PH, 380V/3PH
- ※ COLOR & SHAPE MAY VARY.

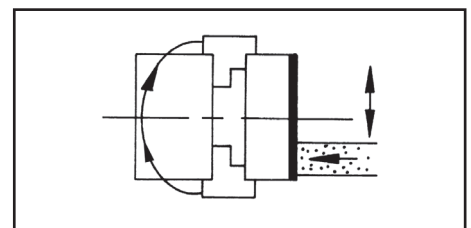
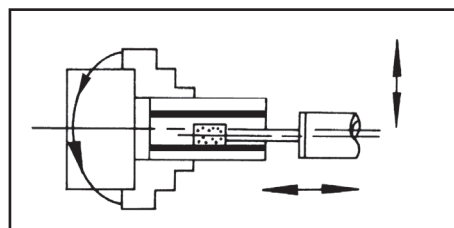
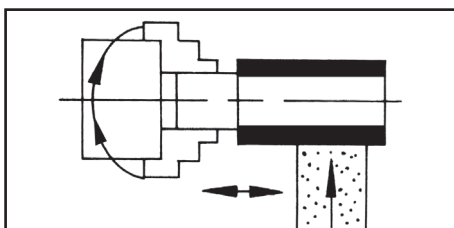
※ **Guaranteed for 3 months**

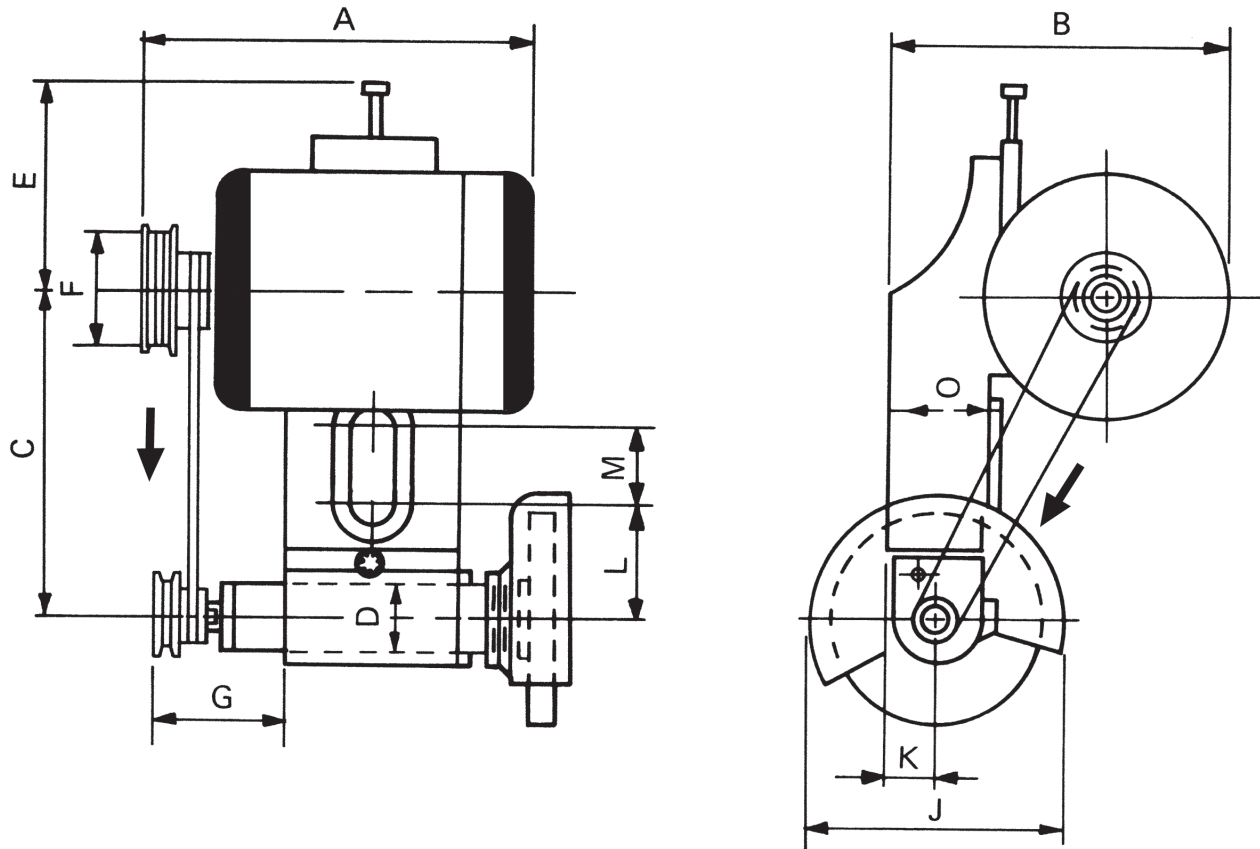
Characteristic Features

- Both the main shafts have been specially designed, and the world-wide precision bearing is used to fit the main shafts which are made of alloy steel heat-treated for high wear resistance, precision, as well as maintaining to the lowest temperature for durability and stability.
- The motor base and the spindle bushing are adjustable.
- The motor is well designed with a special and nice appearance, The R.P.M. of this motor varied depending on the size of the workpiece.
- This grinder is capable of grinding the work piece to a minimum of 3 mm in outer diameter and from 2mm up in inner diameter (bore) with the accuracy within 0.003mm and a well finished surface. (supplied with special attachments).
- The spindle bushing is made of cast iron, and supported by three surfaces. Therefore, it is durable and elastic.
- Materials such as steel, iron, copper (brass), aluminum, cast iron, plastics, procelain, marble, regardless of being heat treated or not, can be ground on this machine which functions lie a cylindrical grinder. So it may lower the cost of the production.

We assure you of high quality products.

※ Types of Grinding For Work Pieces





※ CLOCR MAY VARY
 ※ NOT FOR HIGH PRECISION GRINDING

ORDER NO.	Main Dimension. (mm)												Net Weight (kgs)	Packing Size (mm)
	A	B	C	D	E	F	G	J	K	L	M	O		
VGR-165	280	275	260-310	50	160	110	65	230	40-65	105	40	85	48	520x430x350
VGR-150	280	275	250-300	48	160	110	65	150	40-65	105	40	85	38	520x430x350
VGR-125	270	230	230-280	48	-	110	65	150	34-58	90	15	75	35	520x430x350
VGR-100	235	200	170	40	-	110	50	150	28	45	10	64	24	450x320x340

ORDER NO.	HP	External Spindle		Internal Spindle				Grinder on Lathe (Length of Bed of Lathe) Ft.	For Swing m/m	CODE NO.		
		Size of Wheel dia x width-hole	(R.P.M.) Non-load Speed	Diameter to be ground	Size of Wheel dia x width x hole	(R.P.M.) Non-load Speed	Grinding Depth (mm)					
VGR-165	1	5"x5/8"x5/8"	3000 3700	2490 3070	25-50	1"x3/8"x1/4"	20000 13500	16800 11500	70	8-10	650-1600	5004-003
VGR-150	1	5"x5/8"x5/8"	4500 6000	3750 5000	19-40	1"x3/8"x1/4"	20000 13500	16800 11500	70	6-8	550-900	5004-004
VGR-125	1/2	5"x5/8"x5/8"	4500 6000	3750 5000	19-40	1"x3/8"x1/4"	20000 13500	16800 11500	70	4-6	430-850	5004-005
VGR-100	1/4	5"x5/8"x5/8"	4500 6000	3750 5000	19-40	1"x3/8"x1/4"	20000 13500	16800 11500	50	under 4	320-400	5004-006



VDI Tool Holders

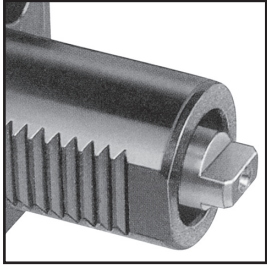
Coupling Type System



VERTEX®

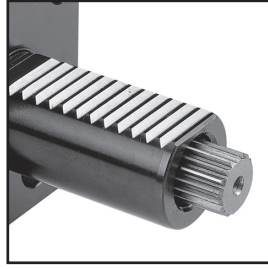
DIN69880

A DIN 1809 (For DUPLOMATIC)



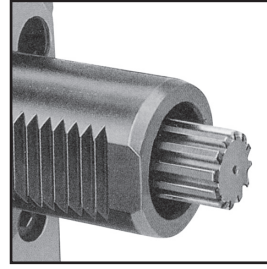
Coupling to DIN 1809

B DIN 5480 (For SAUTER/DUPLOMATIC)



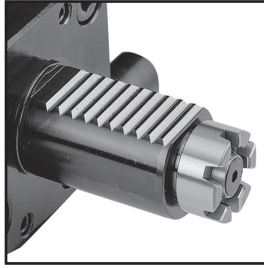
Coupling to DIN 5480

C DIN 5482 (For SAUTER/DUPLOMATIC)



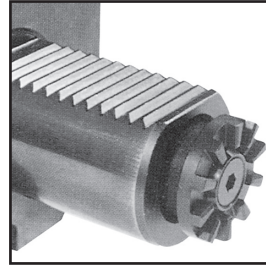
Coupling to DIN 5482

D MT (For BARUFFALDI)



Spur Coupling

E IT (For DUPLOMATIC)



Spur Coupling



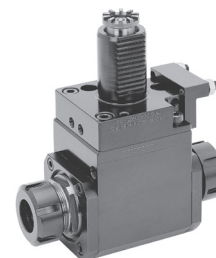
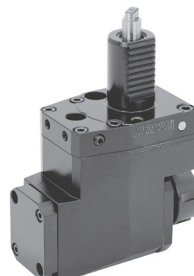
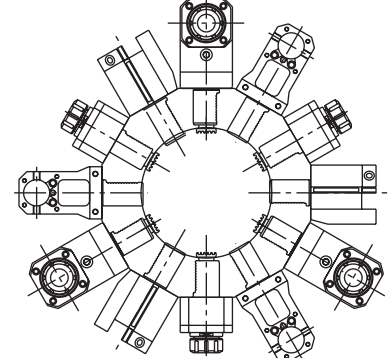
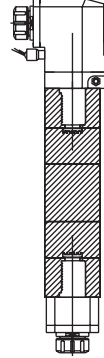
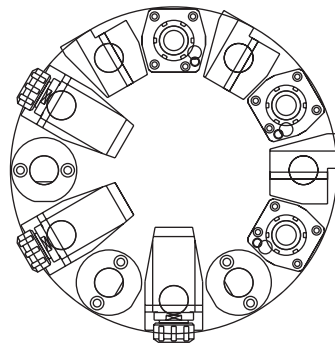
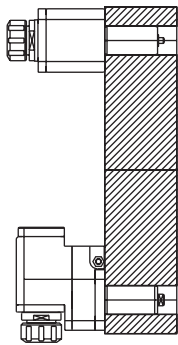
VDI Tool Holders

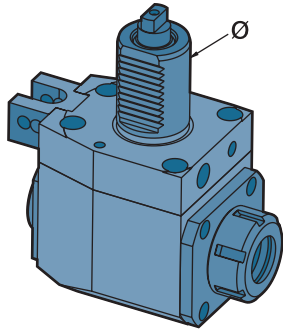
Tool Holders Direction System

DIN69880

A: Axial Direction

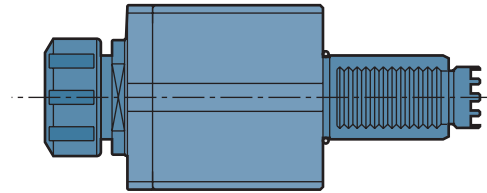
B: Radial Direction (Star Turret)





DA

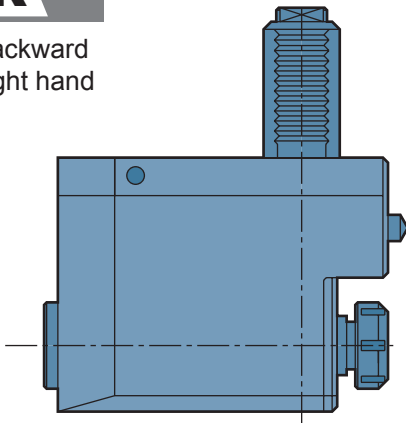
Stright Direct Drive



	VDI 20	VDI 30	VDI 40	VDI 50
SHAFT DIA.	20	30	40	50

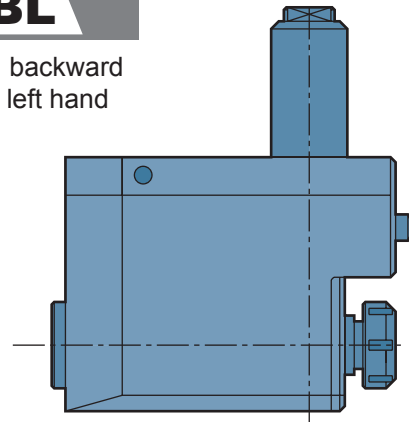
BR

B: backward
R: right hand



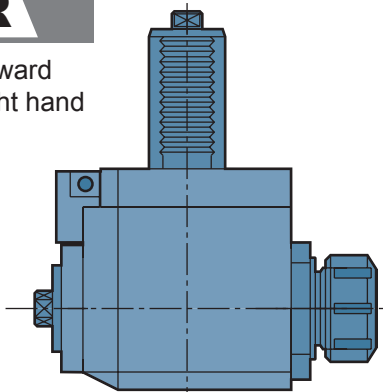
BL

B: backward
L: left hand



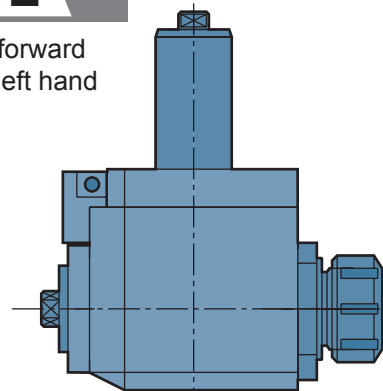
FR

F: forward
R: right hand



FL

F: forward
L: left hand



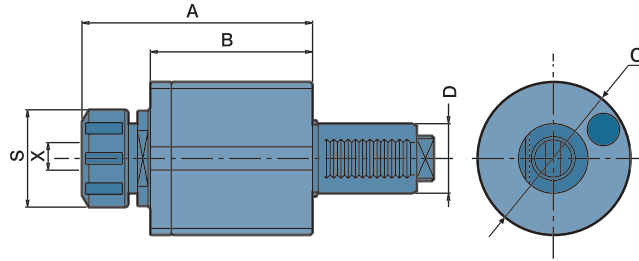
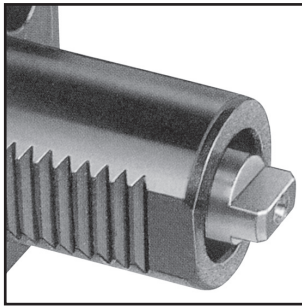
TXX

T: Tapping

EX:

- BR4018093290 it's VDI 40, right hand, coupling type 1809, backward come with ER 32 nut. P.C.D. is 90mm
 - FL3054822555 it's VDI 30 left hand coupling type 5482 (B15x12) forward, come with ER 25 nut. P.C.D. is 55mm
- ※ ORDER MADE, NOT REFUNDABLE.

VDI



Power Transmission According To DIN 1809

- External coolant supply
- Collet is not included
- To be used for collet DIN 6499

DIMENSIONS

ORDER NO.	D DIN 69880	X Capacity	S	Maximum R.P.M.	i	A	B	C	CODE NO.
DA20180916	20	1-10 ER16	32	6000	1 : 1	77	49	58	5006-001
DA30180925	30	1-16 ER25	42	6000	1 : 1	101	70	68	5006-002
DA40180932	40	2-20 ER32	50	6000	1 : 1	111	73.5	86	5006-003
DA50180940	50	3-26 ER40	63	6000	1 : 1	120	81.5	96	5006-004
DA60180950	60	10-34 ER50	78	6000	1 : 1	140	88.5	116	5006-005



Axial Tapping Heads

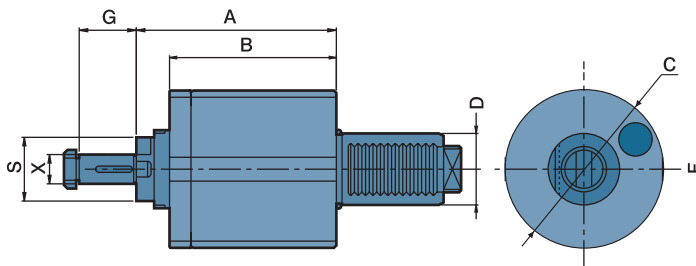
DIMENSIONS

ORDER NO.	D DIN 69880	X Capacity	S	Maximum R.P.M.	i	A	B	C	CODE NO.
TDA30180916	30	1-10 ER16	30	3000	1 : 1	108	71.5	68	5006-006
TDA40180920	40	1-13 ER20	35	3000	1 : 1	95.5	55	86	5006-007
TDA50180925	50	1-16 ER25	42	3000	1 : 1	123	81.5	96	5006-008
TDA60180932	60	2-20 ER32	50	3000	1 : 1	158.5	88.5	116	5006-009



Axial Milling Heads

DIN 1809



- External coolant and intermediate rings supply
- To be used for cutter arbor according to DIN 6358

DIMENSIONS

ORDER NO.	D DIN 69880	X Capacity	S	Maximum R.P.M.	i	A	B	C	G	CODE NO.
DA30180916C	30	16	32	3000	1 : 1	91.5	70	68	27	5006-010
DA40180922C	40	22	40	3000	1 : 1	86.5	73.5	86	31	5006-012
DA50180922C	50	22	40	3000	1 : 1	117	81.5	96	31	5006-013
DA50180927C	50	27	40	3000	1 : 1	117	81.5	96	33	5006-014